

AD Sync Service

For Worksite

Import Users and Groups from Active Directory

AD Sync Service User Manual

Version 7.9

By UC Logic



Contents

1. Support	3
2. Updates.....	3
3. Installation.....	5
4. Active Directory Configuration	9
5. Configuring the AD Sync Service	11
6. Starting the Service	17

1. Support

For support, please contact support@uclogic.com

2. Updates

Version 7.9

11 November 2015

Added ability to specify maximum log size, when the log file reaches this size a new log file is created

Log file size can be between 10K and 30000K (30 Mb). Default is 10Mb.

=====

Version 7.8

2 November 2015

Added ability to select log directory

Added list of valid AD fields to AD Mapping combo box fields

Set default value for user name to be SAMAccountName in AD Mapping when clicking Default button

Support for text values to be added to user fields on add/modify users

Support for %ADSyncJobName% variable to save job name in user fields on add/modify

=====

Version 7.5

8 July 2014

Added ability to test worksite connection and search for Active directory groups

=====

Version 7.4

7 July 2014

Fixed external user setting

=====

Version 7.3
24 June 2014

Changed to use active directory sever name to work with multi forest environments
=====

Version 7.2
4 June 2014

Stopped object not found error messages when group descriptions are empty
=====

Version 7.1
Added AD Sync Manager Application to configure AD Sync jobs

3. Installation

There are two applications that make up the AD Sync Service application.

- AD Sync Service
- AD Sync Manager

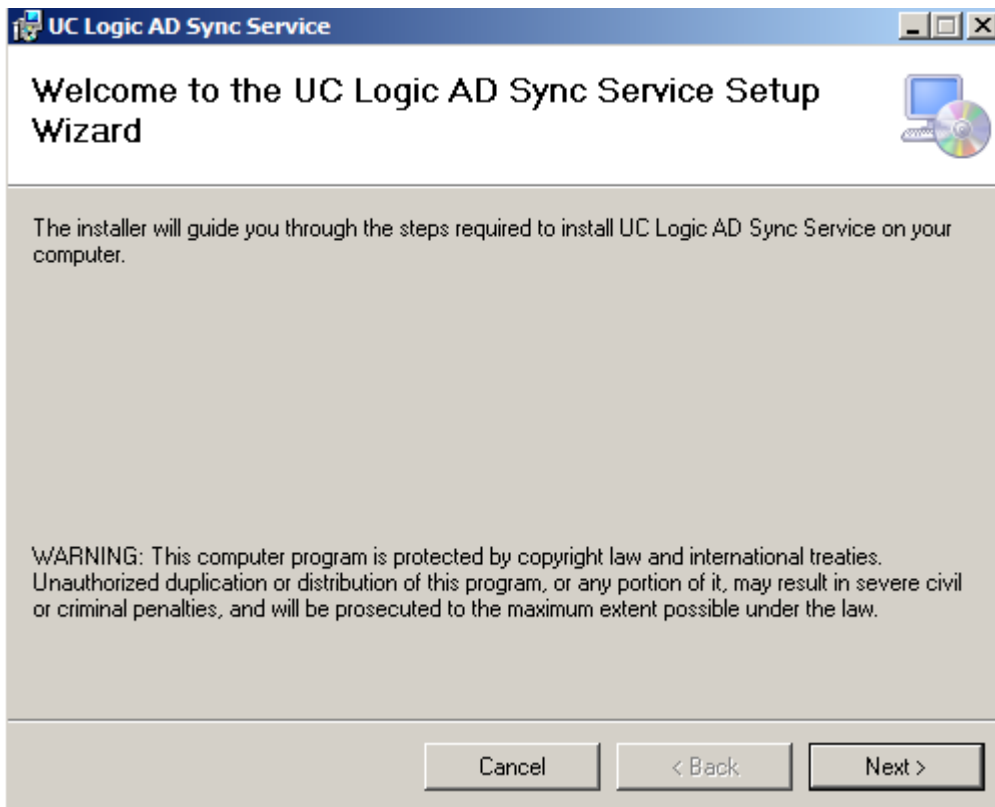
They should both be installed on the same server, ideally not on a server that runs any other Worksite server services.

Pre-requisites:

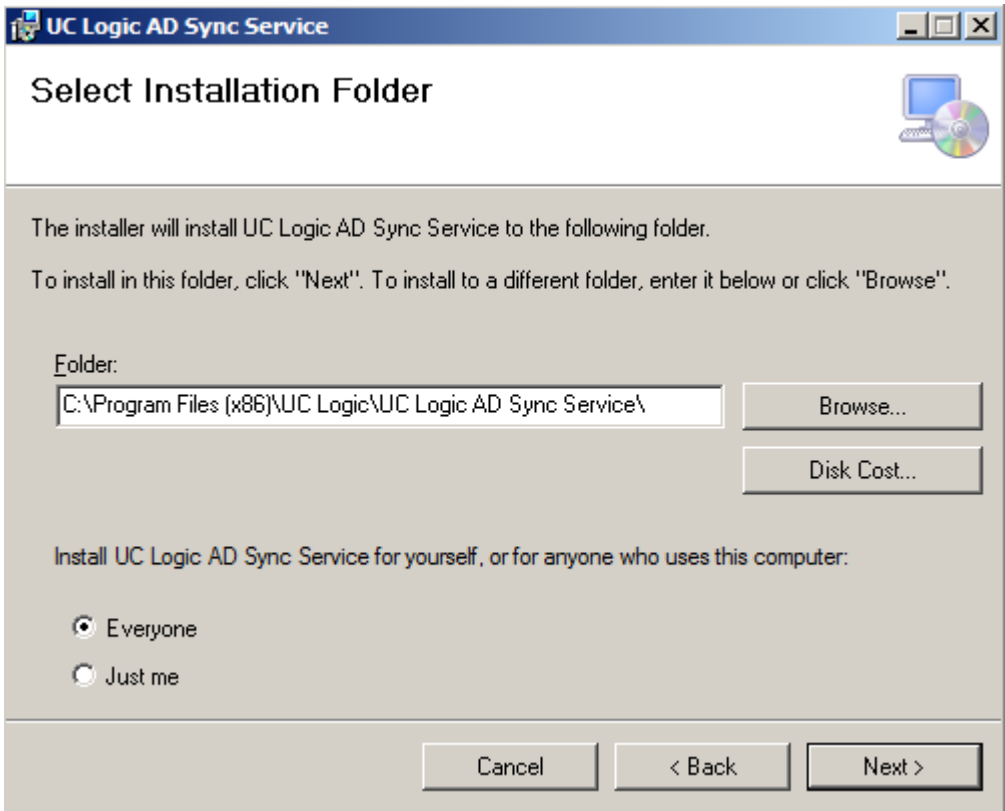
- Windows 2008 server, 32 bit, 4GB Ram
- Either Desksite or Filesite must already be installed
- The server must be part of a domain, not a workgroup/standalone server

Installation will need to be carried out by an administrator user.

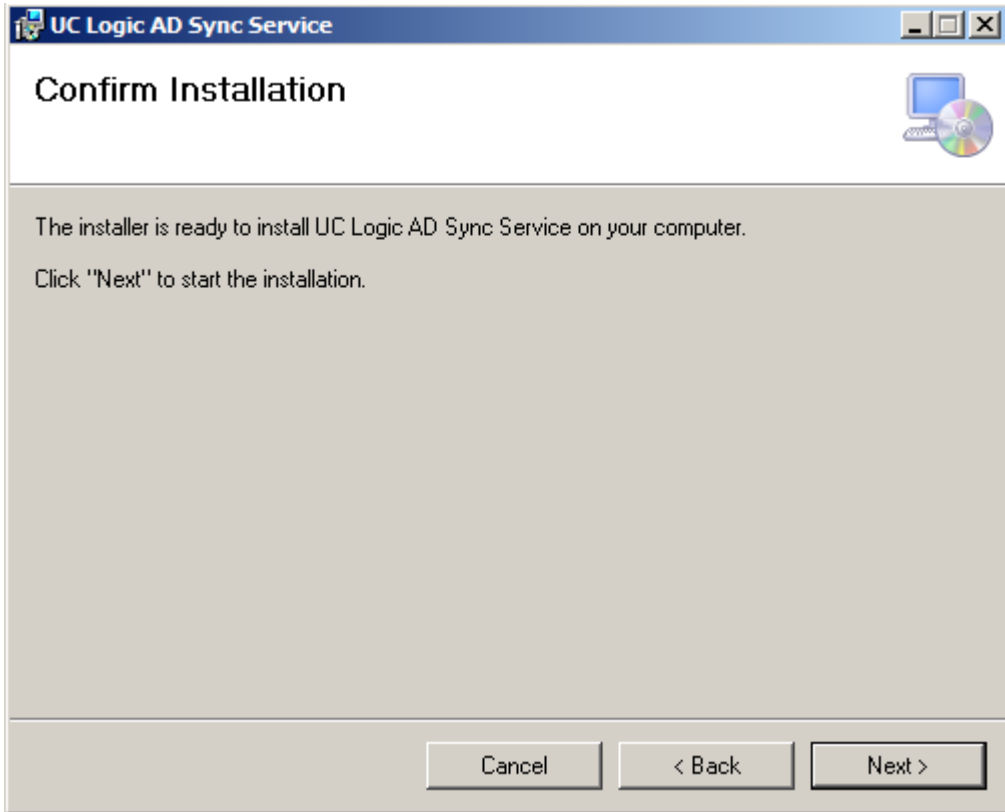
To install the AD Sync service applications, run the setup.exe application



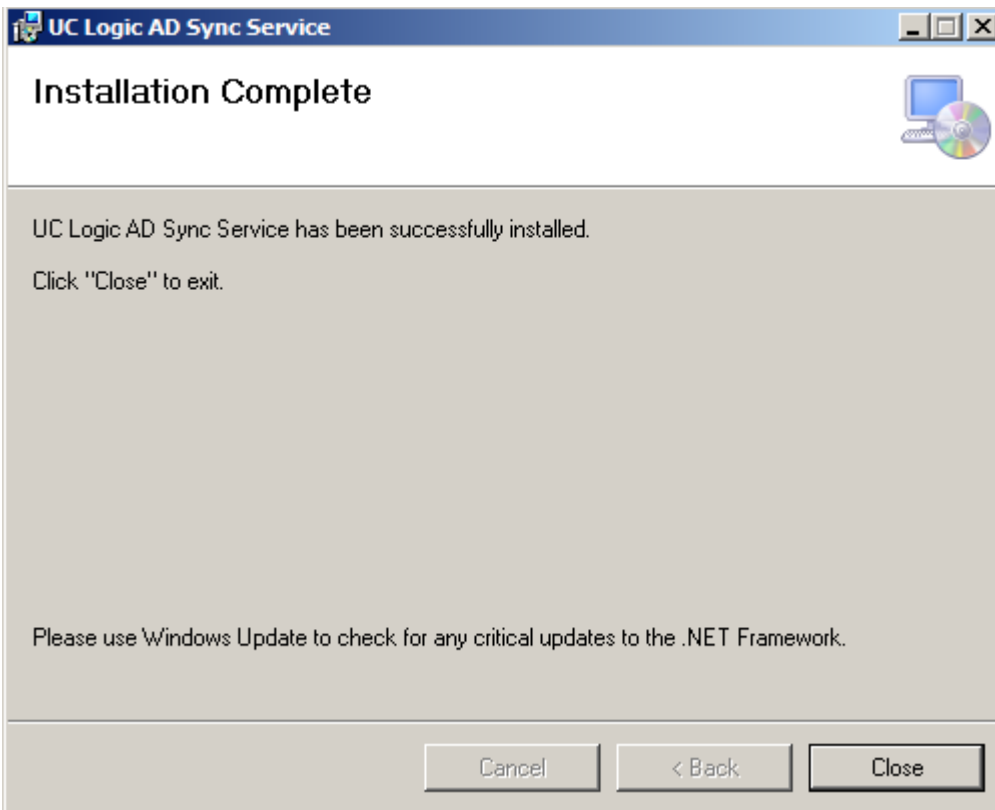
Click Next



Click Next

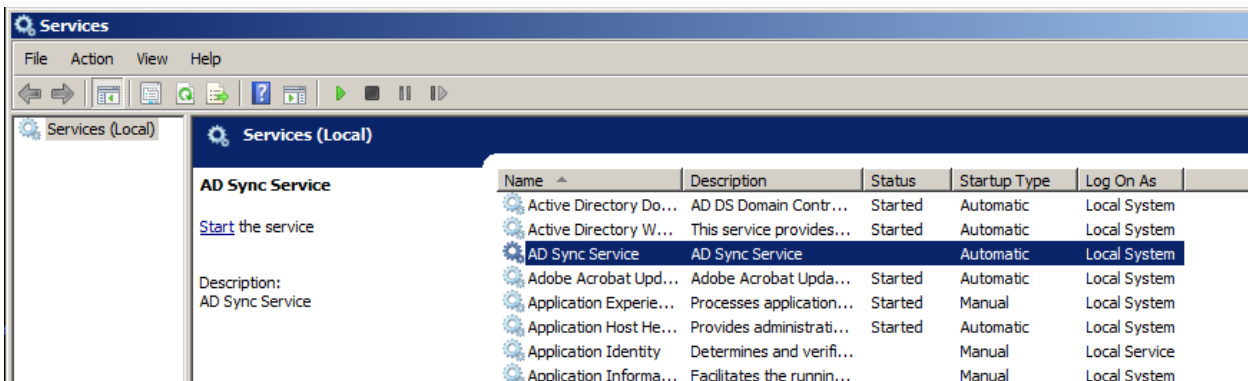


Click Next



Click Close

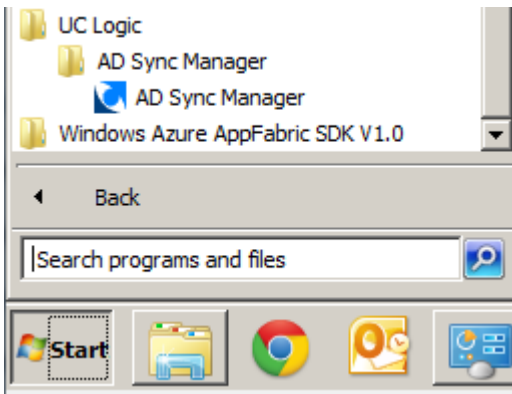
The application will be installed as a windows service called AD Sync Service, running under the local system account.



You may change the account it runs under, but the account must be local administrator.

If you are planning to use trusted login for the service to access the Worksite system, then you must change the 'log on as' user to be one that has an associated Worksite account.

The AD Sync Manager has also been installed



To configure the service use the AD Sync Manager application.

4. Active Directory Configuration

AD Sync Service uses groups created within the Active Directory to identify the users and groups to synchronise with Worksite

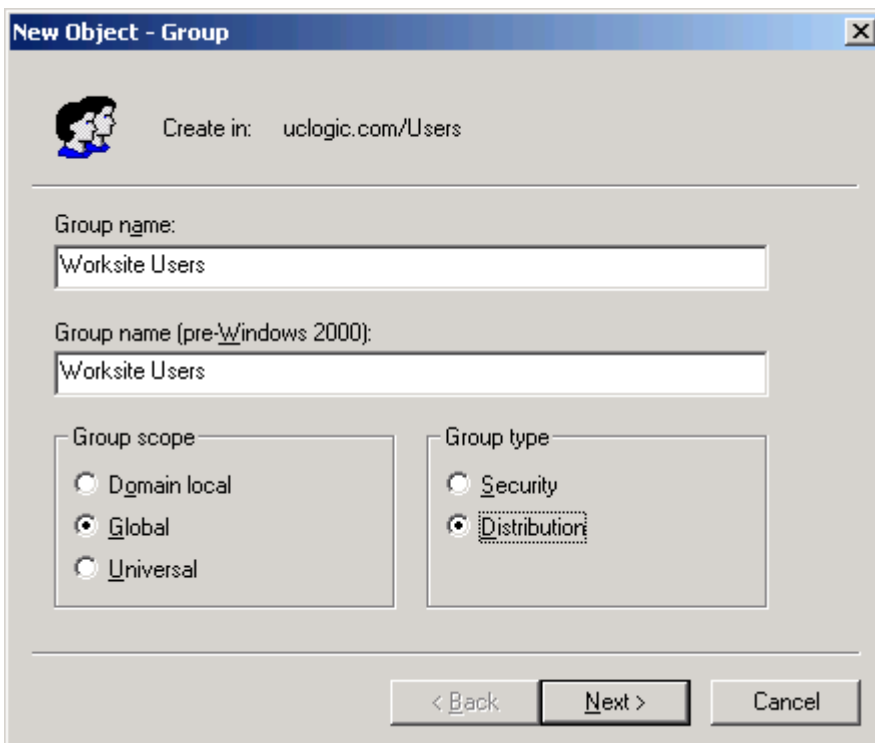
If you need to synchronise users with Worksite, create at least one group that contains a list of AD users.

If you need to synchronise groups with Worksite create at least one group that contains a list of AD groups.

The actual number of groups you will need to create depends on the number of database, default database requirements and access rights required

To create an Active Directory group, load Active Directory Users Administration program

Create a group



The screenshot shows the 'New Object - Group' dialog box in Active Directory Users Administration. The dialog is titled 'New Object - Group' and has a close button (X) in the top right corner. It features a small icon of two people on the left. The 'Create in:' field is set to 'uclogic.com/Users'. The 'Group name:' field contains 'Worksite Users'. The 'Group name (pre-Windows 2000):' field also contains 'Worksite Users'. Under 'Group scope', the 'Global' radio button is selected. Under 'Group type', the 'Distribution' radio button is selected. At the bottom, there are three buttons: '< Back', 'Next >', and 'Cancel'.

Add the members you require.

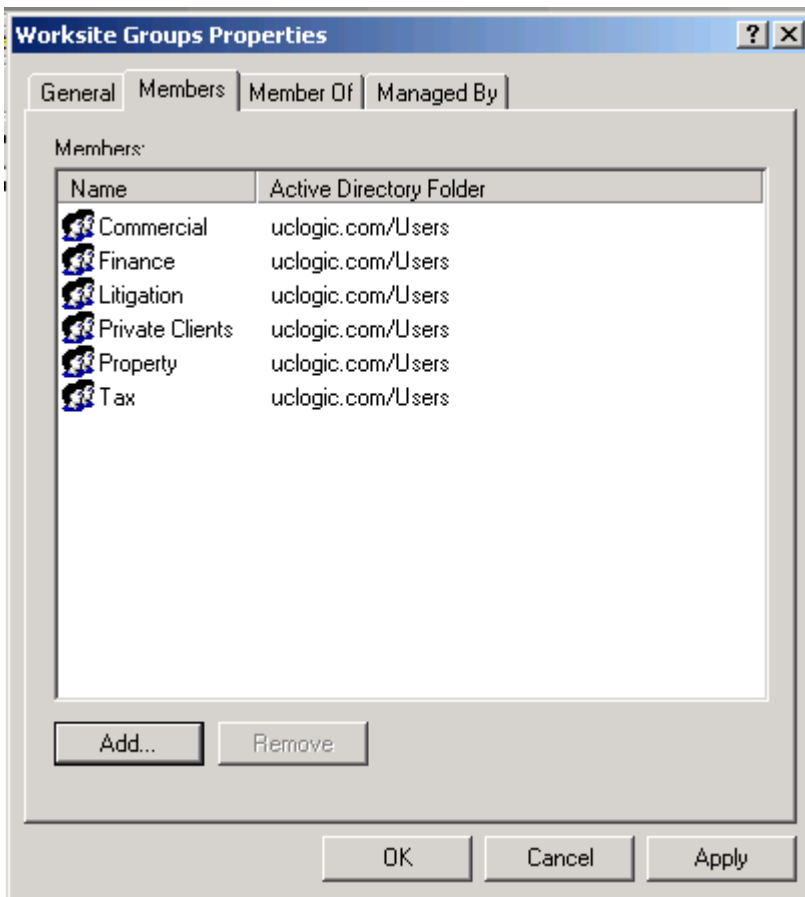
You may add subgroups to this group and AD Sync will get the members for all subgroups to calculate a list of users that need to include in the synchronise process. If a user appears in multiple sub groups, AD Sync will only add the user once.

Notes:

If a user is removed from this group, the user will not be removed from Worksite

If a user is renamed in AD, a new user will be added to Worksite with the new name. Use the Database Administrator ‘rename’ feature to perform the same task in Worksite.

Repeat this process to configure groups for synchronising with Worksite. Instead of adding users to the master group, add groups.



These groups will be added to Worksite, and the members added to the Worksite groups. These groups can contain subgroups as AD Sync will work out the complete membership of the groups before synchronising.

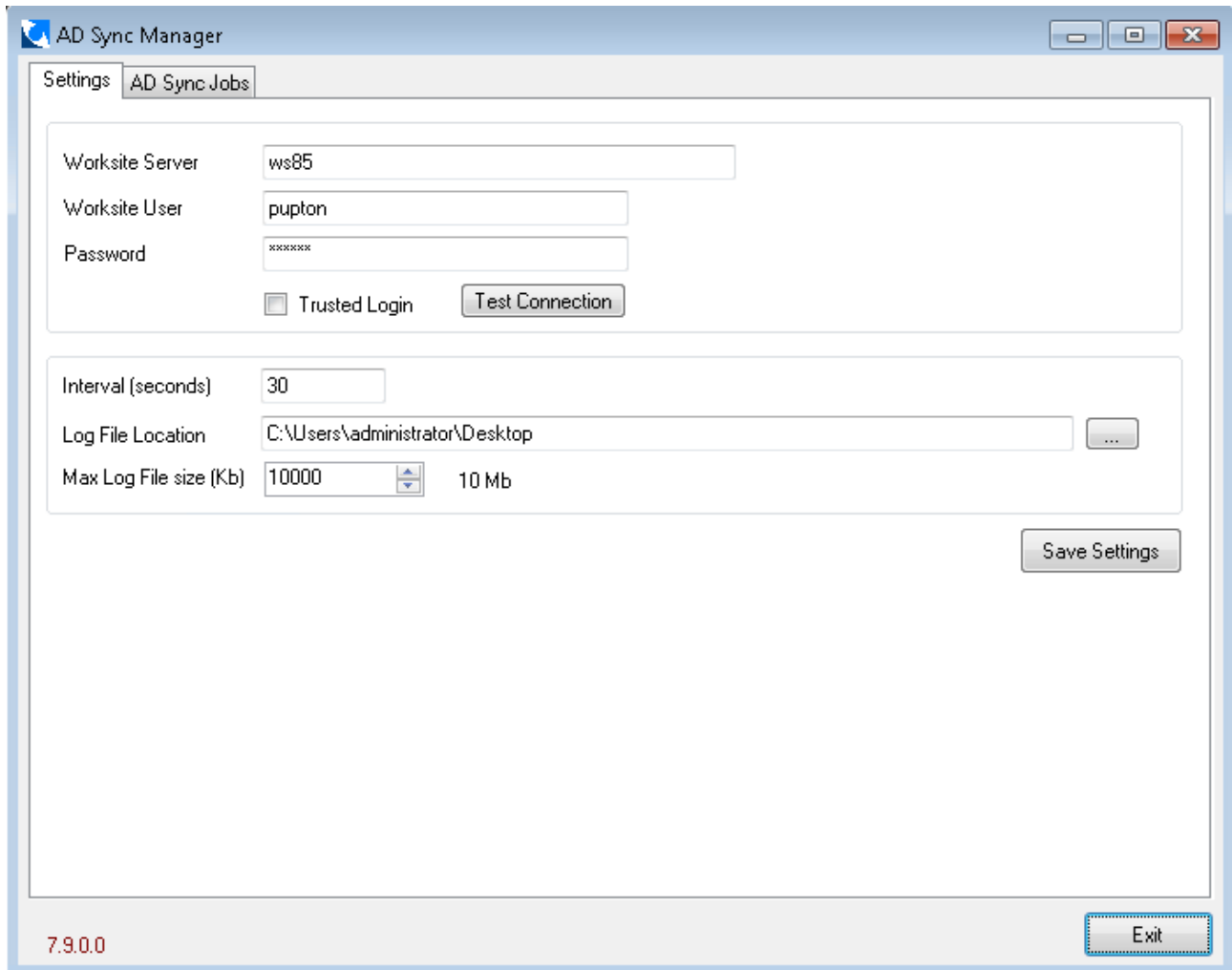
If a user is removed from a group in AD, then this will be reflected in Worksite

If a user is added to a group/subgroup in AD, this will be reflected in Worksite

5. Configuring the AD Sync Service

The service is configured by settings held in the registry. These are managed using the AD Sync Manager application.

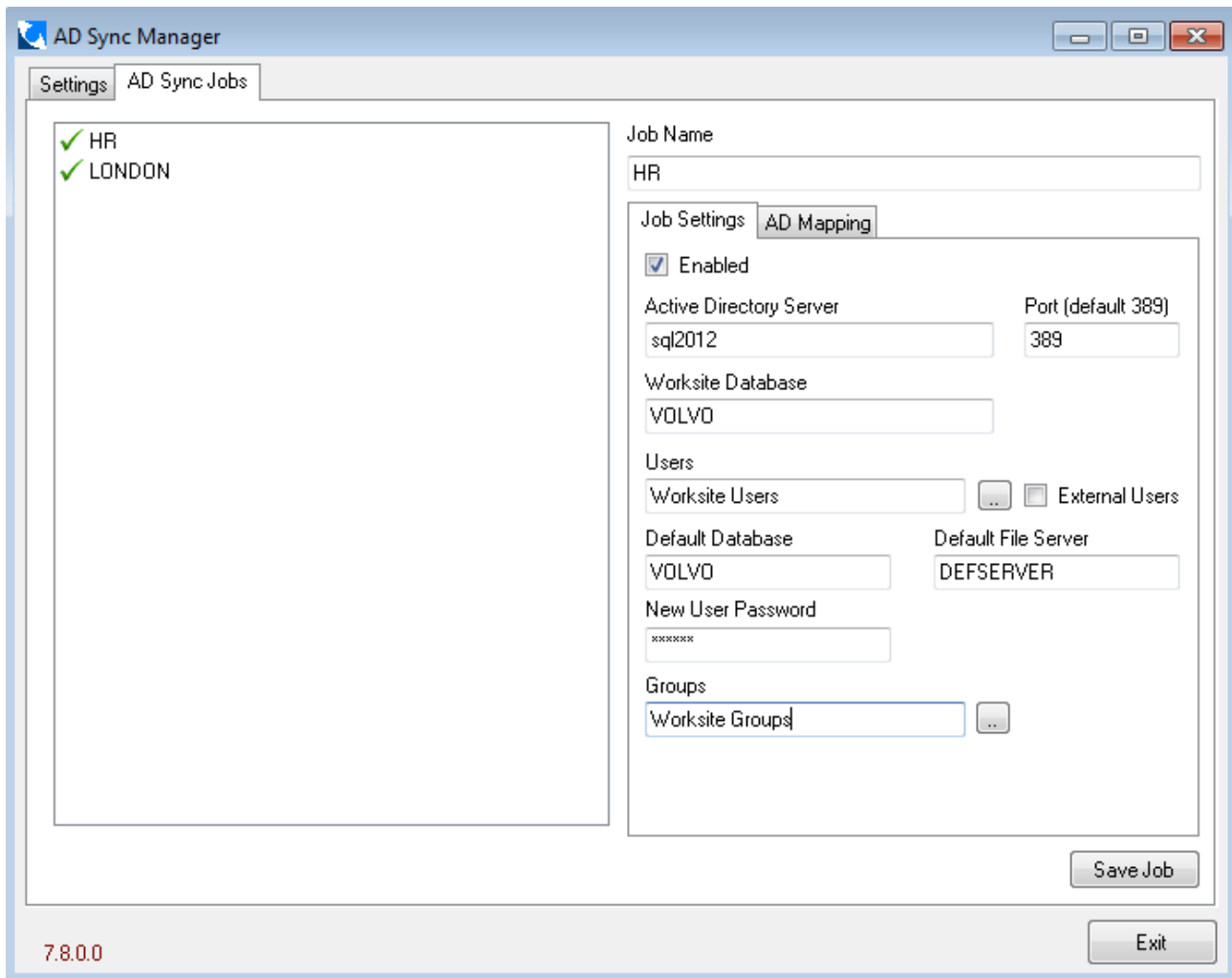
Start the AD Sync Manager application



Add the settings required

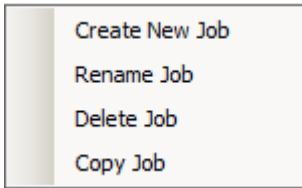
These settings determine the user that is used to login to worksite to add the users and groups. The Worksite user should be a user that is a member of the NRTADMIN group in all databases.

Next configure the jobs by clicking the AD Sync Jobs tab



Field	Description	Typical Values
Active Directory Server	The domain controller server for the application to search	DCServer.uclogic.com or DCServer
Port	Enter the port number to communicate with the LDAP Server	Default is 389
Users	An active directory group with a list of members that are to be synchronised with Worksite	Worksite Users
New User Password	Enter a password to assign to new users	
Default File Server	Enter the document file server to be used by the new user. If left blank the default DEFSERVER will be used	DOCSEVER2
Groups	An active directory group with a list of subgroups. The first set of sub groups gets synchronised. All members of these groups will be added as group membership in the Worksite database	Worksite Groups
Worksite database	Select the Worksite database to synchronise to.	LEGALDB
Default Database	Selects the default database to assign to new users	LEGALDB
External Users	Check this if you want to add the users as external users	
Enabled	Check this to enable the job to run during the next synchronisation run	

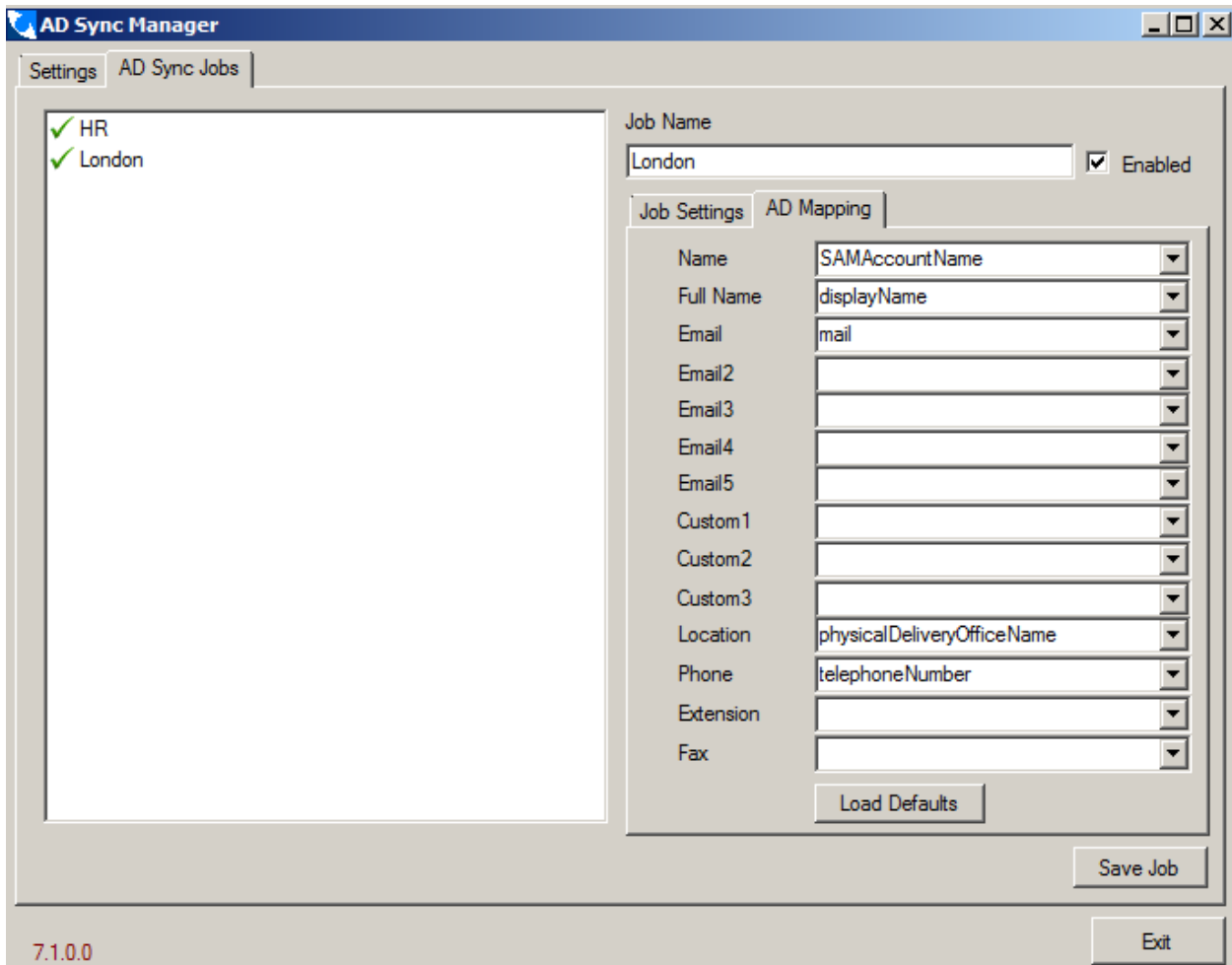
Right click in the jobs pane to display the pop up menu



To create a new job, click Create New Job, then complete the fields in Job Settings and AD Sync Mapping before clicking Save Job.

To copy an existing job, right click it, select Copy Job, then enter a new Job name and click Save Job.

Click the AD Mappings tab to specify which Active directory fields should map to which Worksite fields



Some fields have recommended defaults. We suggest the Name is always mapped to SAMAccountName,

To use other active directory fields you can just enter the Active Directory field name manually in the corresponding field, or use the lookups on some of the fields

Job Name

HR

Job Settings AD Mapping

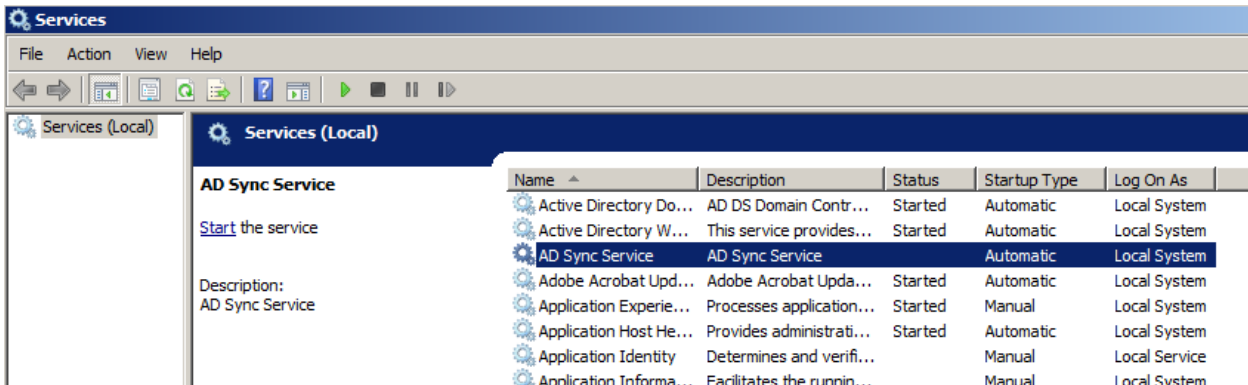
Name	SAMAccountName
Full Name	displayName
Email	mail
Email2	
Email3	
Email4	
Email5	
Custom1	%ADSyncJobName%
Custom2	"Penzance"
Custom3	
Location	physicalDeliveryOfficeName
Phone	extensionAttribute4
Extension	extensionAttribute5
Fax	extensionAttribute6

- extensionAttribute7
- extensionAttribute8
- extensionAttribute9
- extensionName
- facsimileTelephoneNumber
- givenName
- homeDirectory
- homePhone
- initials
- mail
- manager
- middleName
- mobile
- name
- otherPhone
- pager
- personalTitle
- physicalDeliveryOfficeName
- profilePath
- SAMAccountName
- secretary
- sn
- telephoneNumber
- title
- uid
- userPrincipalName
- wwwHomePage

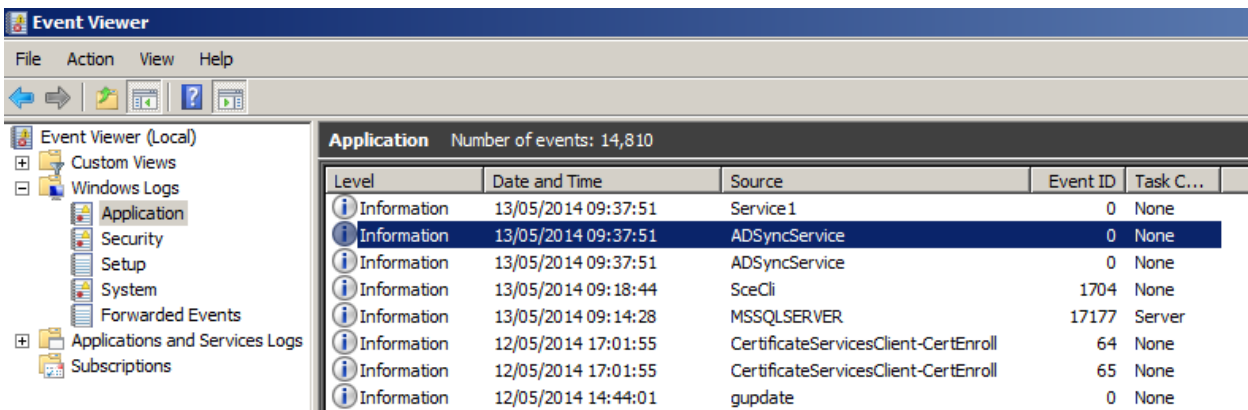
You can also just add any text to be added by enclosing this between double quotes – see Custom3 above, or add the Job name by entering %ADSyncJobName% - see Custom1 above.

6. Starting the Service

After the AD Sync Manager has been used to define the jobs required, the service can be started from the Services application in Windows



Any issues with starting the service will be logged to the event viewer



Once the service is started the log file will then be used to record activity. The log file location can be configured using the AD Sync Manager, under the Settings tab. The log file will be called ADFSvcServiceLog.txt. Each time the service is started a new log file is created and the old one will be renamed using a date/time string.

```

ADSyncServiceLog.txt - Notepad
File Edit Format View Help
13/05/2014 09:37:51 Install Directory: C:\Program Files (x86)\UC Logic\UC Logic AD Sync Service
13/05/2014 09:37:51 Application Version : 7.1.0.0
13/05/2014 09:38:01 =====
13/05/2014 09:38:01 Timer Fired, intervals of 120 seconds
13/05/2014 09:38:01 -----
13/05/2014 09:38:01 Processing Job HR
13/05/2014 09:38:01 Connected to server SYSEROWS85 as user PUPTON
13/05/2014 09:38:01 AD Server=uclogic.local
13/05/2014 09:38:01 Port=389
13/05/2014 09:38:01 Database=HR
13/05/2014 09:38:01 Default Database=LONDON
13/05/2014 09:38:01 Default File Server=DEFSERVER
13/05/2014 09:38:01 Groups=worksiteGroups
13/05/2014 09:38:01 Users=worksiteUsers
13/05/2014 09:38:01 External User=N
13/05/2014 09:38:01 Updating User: Phil
13/05/2014 09:38:01 Updating User: pupton
13/05/2014 09:38:01 Sales (Sales Team) : 1 members
13/05/2014 09:38:01 SALES (Sales Team) : User PHIL (Phil Ayton)
13/05/2014 09:38:01 Support (Support Team) : 1 members
13/05/2014 09:38:01 SUPPORT (Support Team) : User PUPTON (Paul Upton)
13/05/2014 09:38:01 Logout from worksite Server
13/05/2014 09:38:01 -----
13/05/2014 09:38:01 Processing Job London
13/05/2014 09:38:01 Connected to server SYSEROWS85 as user PUPTON
13/05/2014 09:38:01 AD Server=uclogic.local
13/05/2014 09:38:01 Port=389
13/05/2014 09:38:01 Database=HR
13/05/2014 09:38:01 Default Database=LONDON
13/05/2014 09:38:01 Default File Server=DEFSERVER
13/05/2014 09:38:01 Groups=worksiteGroups
13/05/2014 09:38:01 Users=worksiteUsers
13/05/2014 09:38:01 External User=N
13/05/2014 09:38:01 Updating User: Phil
13/05/2014 09:38:01 Updating User: pupton
13/05/2014 09:38:01 Sales (Sales Team) : 1 members
13/05/2014 09:38:01 SALES (Sales Team) : User PHIL (Phil Ayton)
13/05/2014 09:38:01 Support (Support Team) : 1 members
13/05/2014 09:38:01 SUPPORT (Support Team) : User PUPTON (Paul Upton)
13/05/2014 09:38:01 Logout from worksite Server
13/05/2014 09:40:01 =====
13/05/2014 09:40:01 Timer Fired, intervals of 120 seconds
13/05/2014 09:40:01 -----
13/05/2014 09:40:01 Processing Job HR
13/05/2014 09:40:01 Connected to server SYSEROWS85 as user PUPTON
13/05/2014 09:40:01 AD Server=uclogic.local

```