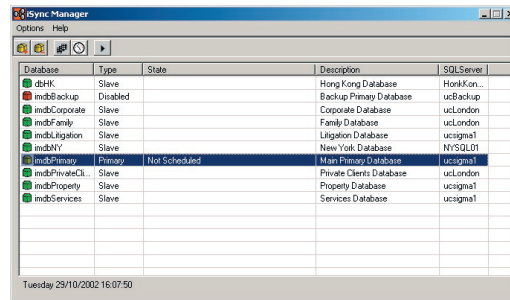


Simplifying the Worksite database administration task

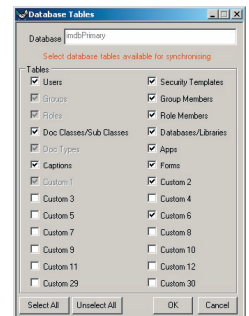
Managing multiple iManage databases is often a time consuming process. Each amendment would normally need to be made to each individual database. This is not only a long process but can introduce inconsistent data between different databases.



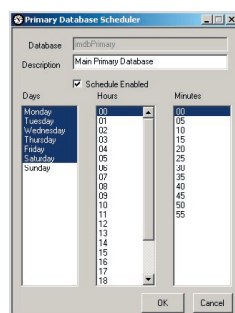
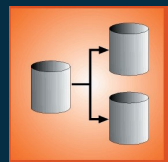
Let iSync manage your Worksite metadata



Individual tables can be selected to be either available or unavailable for synchronising, allowing for selective updating of a databases information



iSync replicates iManage database administration data, using a designated 'primary' database. This 'primary' database is updated using standard iManage database administration tools, then iSync takes over to replicate this data to all other 'slave' databases.



The replication event can be initiated manually or scheduled using the integrated scheduler routine. This allows fully unattended replication to take place at 'quiet' times for the network.

Key Features

- Replicates iManage database administration data.
- Selective table replication.
- Integrated scheduler or manual operation.
- Runs as a Windows Service
- Replicates all or just selected databases.
- Minimal network traffic from local processing.
- No need to amend database structure.
- No need for complex triggers.

Supported Platforms

Windows Server 2008, 2008, 2012

Microsoft SQL Server 2005, 2008, 2012

iManage database versions 8.5, 9.0, 9.1, 9.2, 9.3